

DRY TYPE MULTI-JET WATER METER

For over 50 years, Automat Group has set the benchmark in manufacturing precision-engineered solutions, offering a seamless blend of innovation, quality, and reliability. From custom-designed parts to advanced sub-assemblies, we have been a trusted partner in ensuring long-term operational excellence across industries.

With decades of engineering excellence, Automat Group continues to deliver trust, precision, and efficiency. As a leader in water management solutions, we now bring our innovation, quality, and reliability to water metering with the introduction of Aqua meter a Dry-Type Multi-Jet Water Meter.

The Aquameter

The Aquameter is designed to measure portable water. It's solid & sturdy construction makes it suitable for various applications. It ensures high sensitivity and accurate registration throughout a wide flow range.

Application

Measuring the total volume of cold portable water passing through the pipeline.



IS 779 : 1994



CM/L No. -8700180214

Highlights

- AMR Ready
- Multi-jet, super dry-dial design, engineered for effortless maintenance.
- Magnetic drive provides reliable operation and long-lasting service.
- Sealed register maintains clarity in readings for long-term use.
- Meets IS 779 and ISO4064 Class B standards for horizontal installation.
- High Accuracy:
Lower Zone: $\pm 5\%$ (Q_{\min} up to but excluding Q_t)
Upper Zone: $\pm 2\%$ (Q_t up to and including Q_{\max})

Working condition

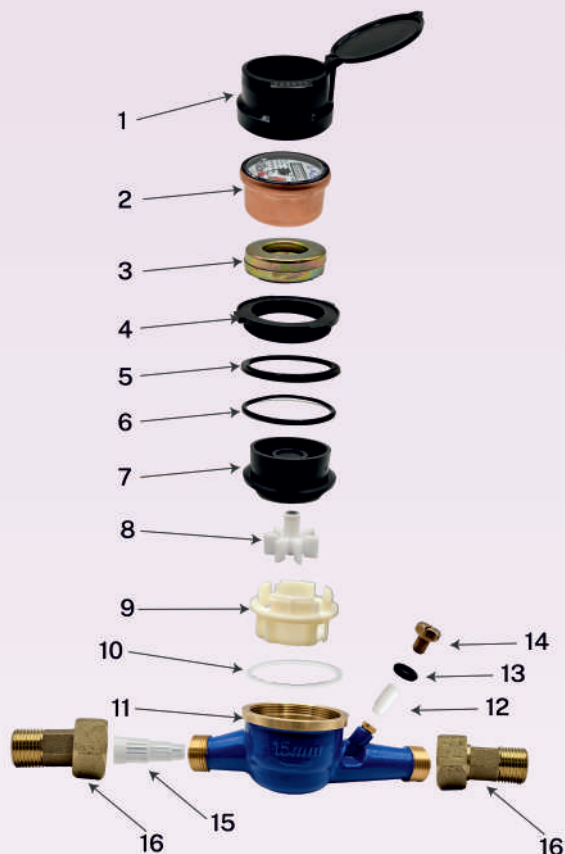
Water temperature:

0.1°C ~ 50°C for cold water meter.

Water pressure: $\leq 1.6\text{Mpa}$

Max head-loss: $\leq 0.1\text{Mpa}$

Aqua Meter Part List

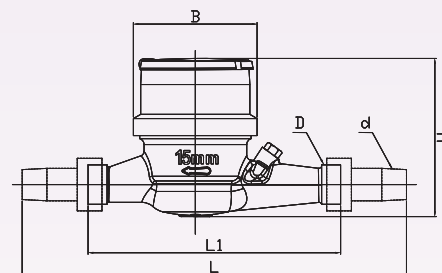


Part No.	Part Description
1	Lid Assembly
2	Copper / plastic can register assembly
3	Anti magnetic ring
4	Tightening ring
5	Sliding ring
6	O-ring
7	Separating plate assembly
8	Impeller assembly
9	Measuring chamber
10	Chamber gasket
11	Body
12	Calibration screw
13	Sealing screw O-ring
14	Sealing screw
15	Inlet strainer
16	Coupling assembly

Dimensions

Type	Size	Length with Nipples	Length w/o Nipples	Width	Height	Connected Thread	Body Thread
		L	L1				
		mm				ISO 7-1	ISO 228-1
AquaMeter	15	250	165	80	100	R 1/2	G3/4B

Dimensions (mm)



Metrological Data

Type	Size (mm)	Class	Max. Flow	Nominal Flow	Transitional Flow	Minimum Flow	Minimum Reading	Maximum Reading
			Q _{max}	Q _n	Q _t	Q _{min}		
				L/h		Litre		Kilo Litre
AquaMeter	15	B	3000	1500	120	30	0.05	99999.9999